

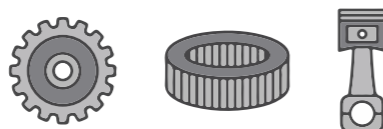


## UNC 160S

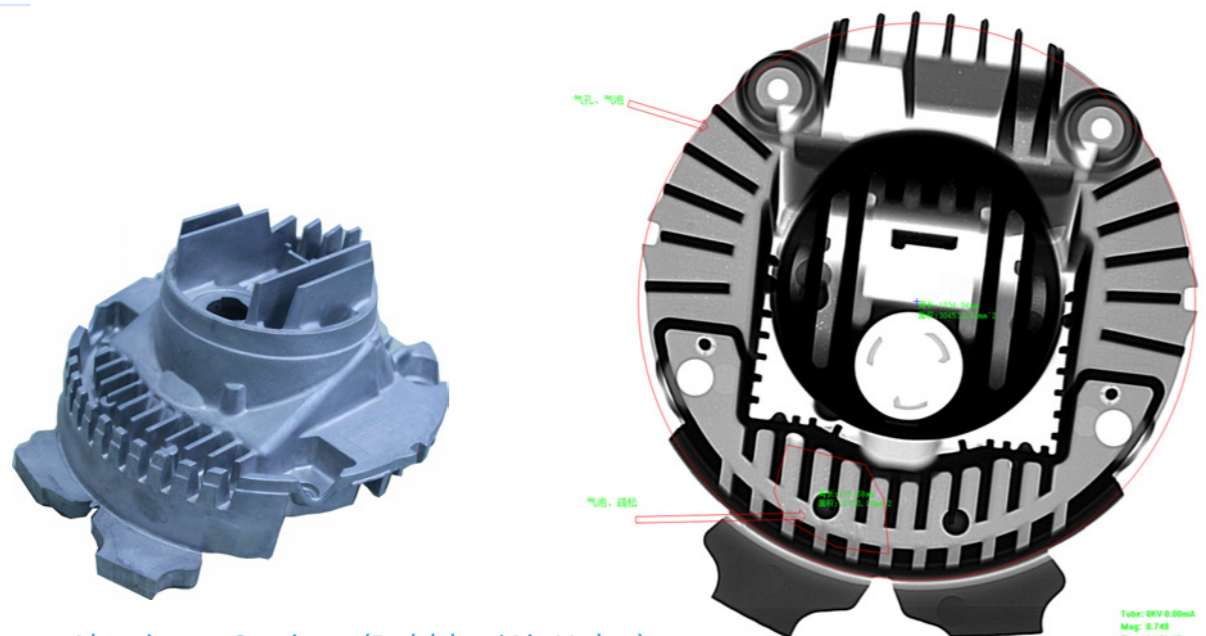
Small Casting NDT Real-time Imaging X-ray Equipment

### APPLICATION

- Aluminum castings, iron castings
- Auto parts
- Metal products, refractory materials



### X-RAY IMAGE



Aluminum Castings (Bubbles/Air Holes)

Tube: 8KV 8.00mA  
Mag: 5.74x  
Time: 14.031.40  
Date: 2017/11/11 11:11

### TECHNICAL SPEC

System Parameters	
Dimensions	1580mm*1160mm*2050mm (L*W*H)
Equipment weight	1.7T
Power	3kW
Maximum penetration (AL/FE)	100mm/20mm
Detection range	Φ300*300mm
Load weight	15kg
Work environment	5-40° ≤80%HR
Power supply	AC220V±5% 50HZ
X-ray leakage dose rate	≤1μSv/h
X-ray Generator	
Tube voltage	160kV
Power	480W
Focal size	0.5mm
Detector (FPD)	
Image area	158mm×158mm
Pixel matrix	1024×1024
Pixel pitch	154μm

### Software Function

**Image processing:** brightness and contrast adjustment; stacking frames, window width and level adjustment; image enhancement, filtering, sharpening, invert, relief and bubble measure; ove, zoom in, zoom out, display image scaling, display the current mouse coordinates and gray values

**Image measurement:** distance, radius, polygon, angle measurement; arrows and text labels; save the image after processing;

**Motion control:** the speed adjustment of each moving axis; CNC programming; manual operation;

### Additional function

- CNC programmable control, to save the detection time of the bulk of the workpiece.
- Customizable fixture.
- Servo stepper motor drive, stable operation.
- Voltage regulator, isolation, filtering, grounding and other protective functions are complete.
- Set aside industrial cloud interface, data and pictures in real time upload, with traceability and large data analysis (optional).

### MACHINE FOOTPRINT

