

ETHER NDE

SHORT PROBE CATALOGUE

ALL THE MOST COMMONLY USED
EDDY CURRENT PROBES





Welcome to the *ETher NDE* Short Probe Catalogue, the simpler way to find the probes you need.

The Short Probe Catalogue is designed to show the most commonly used Eddy Current Probes and Probe Kits for non-destructive testing (NDT) for use within the aerospace, power generation, oil & gas, transport, alternative energy and metals processing industries.

All of the *ETher NDE* Eddy Current Probes are designed and manufactured at our factory in the UK by a specialist team with many combined years of NDT experience.

Within this catalogue we have focused on commonly used probes however, *ETher NDE* have a full range of ECT probes available including the ability to design and manufacture special probes. If you do not find what you are looking for in this catalogue, please contact us and we will endeavour to assist you further.

ETher NDE prides itself on operating with its core principles as the main focus. The core principles are:

- 1. The ability to speak to someone who understands our product, the industry and your applications.**
- 2. Industry leading delivery on equipment and probes and the ability to respond to your challenges.**
- 3. That our products are second to none in both performance and quality.**

CONTENTS

What Probe For Which Application?	Page 1
Common Probe Kits	Page 3
Pencil Probes	Page 6
Thread Inspection Probes	Page 15
Broadband Probes	Page 19
Rotating Probes	Page 22
Standard Weld Probes	Page 25
Internal Diameter (ID) Probes	Page 30
Low Frequency (Spot Face) Probes	Page 33
Sliding Probes	Page 36
Conductivity Probes	Page 38
Aircraft Wheel Probes	Page 41
Test Blocks	Page 42
Probe Leads	Page 46
Probe Adaptors	Page 48
Rotary Drive	Page 50
ETHER NDE Equipment	Page 51
Useful Eddy Current Formulae	Page 52

WHICH PROBE SUITS YOUR APPLICATION?

Application	Sub - Application		
Defect Detection	Surface Crack Detection	✓	✓
	Sub-surface Defect / Corrosion Detection	✓	✗
	Dual Frequency Inspection with mixing	✓	✓
Material Sorting	Non-Ferrous	✓	✓
	Ferrous	✓	✓
	Coating Thickness Assessment	✓	✓
	Wall Thickness Assessment	✓	✓
Tube Inspection	ID Non-Ferrous	✗	✓
	OD Non-Ferrous	✗	✗
Weld Inspection	As per EN1711	✗	✓
Hole Inspection	Manual	✓	✗
	Dynamic	✓	✗
Thread Inspection		✗	✗
Automated Component Testing		✗	✗
Wheel Inspection		✓	✗



Aerospace



Power
Generation



Oil & Gas

Industry				Best Probe Option
				
✓	✓	✓	✓	Shielded Surface Probe Page 7-14
✓	✓	✓	✓	Spot Faced Probe Page 33
✓	✗	✓	✗	Suitable Probe Page 33-36
✓	✓	✓	✓	Conductivity Probe Page 38
✓	✓	✓	✓	Conductivity Probe Page 38
✓	✓	✓	✓	Conductivity Probe Page 38
✓	✓	✓	✓	Spot Faced Probe Page 33
✓	✗	✓	✗	ID Probe Page 30
✗	✗	✗	✓	Encircling Coil sales@ethernde.com
✓	✓	✓	✗	Weld Probe Page 25
✓	✓	✓	✗	Bolt Hole Probe sales@ethernde.com
✓	✓	✓	✗	Mercury Rotary Drive Page 50 and 22
✗	✗	✗	✗	Custom Thread Probe Page 15-18
✗	✓	✗	✓	Differential Probe sales@ethernde.com
✗	✗	✗	✗	Wheel Probe Page 41



Transportation



Alternative
Energy



Metals
Processing

PROBE KITS

KEEPING IT SIMPLE WITH A COMPLETE KIT

WELD PROBE PACKAGE (TO FIT WELDCHECK, AEROCHECK & AEROCHECK+)

<i>ETher NDE</i> Part No.	Description
KAWEL001	KIT, Weld, Probes + Accessorys Including:
PWM100S00	Probe, Weld, Dia 16.00mm (Medium) 100kHz, Straight, Disconnect
PUB100k	Probe, Unshielded, Broad Band, 100k (35kHz-250kHz), BNC
ATBW	Accessory. Test Block, Weld Probe, Ferrous (Steel EN1A) + x 4 0.5mm Shims, 0.5, 1.0, 2.0mm slots
ALL12-L04-015B	Accessory, Lead, Lemo 12-Way - Lemo 4-Way, 1.5m (Bridge)
ALLCX-B02-015A	Accessory, Lead. Lemo 00 to BNC, 1.5m (Vantage)
AW003	Accessory, Butterfly PTFE Tape (Pack of 30)
AC002	Accessory, Deluxe Probe Case PHDC1

SURFACE PROBE PACKAGE (TO FIT WELDCHECK, AEROCHECK & AEROCHECK+)

<i>ETHer NDE</i> Part No.	Description
KASUR001	KIT, Surface Inspection Including:
PU500PSFE/NFE	Probe, Unshielded, 500kHz, Fe/NFe, Plastic Handle, Straight 100mm Long
PS002PS028-114N	Probe, Shielded, 2MHz, Plastic Handle, Straight, 28mm Tip Length (Total Length 114mm, 4.5") (Straight Shank)
PS500PD064-114N	Probe, Shielded, 500kHz, Plastic Handle, Double Crank, 6.4 (0.25") Tip Length (Total Length 114mm, 4.5") (15° Crank, 90° tip Shank)
PS002PD064-114N	Probe, Shielded, 2MHz, Plastic Handle, Double Crank, 6.4 (0.25") Tip Length (Total Length 114mm, 4.5") (15° Crank, 90° tip Shank)
PK065002NFE	Probe, Knife, 65°, 2MHz, NFe, Unshielded
ALLCX-M02-015A	Accessory, Lead, Lemo 00 to Microdot, 1.5m (VANTAGE, ETi)
ATBF	Accessory. Test Block, Ferrous (Steel EN1A), 0.2, 0.5, 1.0mm slots
ATBA	Accessory. Test Block, Aluminium Alloy 7075-T6, 0.2, 0.5, 1.0mm slots
AW003	Accessory, Butterfly PTFE Tape (Pack of 30)
AC002	Accessory, Deluxe Probe Case PHDC1

SUB-SURFACE PROBE PACKAGE

<i>ETher NDE</i> Part No.	Description
KASUBS001	KIT, Sub Surface Inspection, Low Frequency Including:
PUS16	Probe, Surface, Straight, Dia 16mm, 300Hz - 100KHz, Plastic, Lemo 4-Way
PUR11	Probe, Surface, Right Angled, Dia 11mm, 300Hz - 100KHz, Plastic, Lemo 4-Way
ALL12-L04-015R	Accessory, Lead, Lemo 12-Way - Lemo 4-Way, 1.5m (Reflection)
ATB001	Accessory, Test Block, Aluminium 7075-T6, 1.6mm Thick, x 4 Flat Bottom Holes 75% (1.2mm), 50% (0.8mm), 25% (0.4mm), 12.5% (0.2mm), Deep.

ROTARY DRIVE KIT (FOR AEROCHECK+)

<i>ETHer NDE</i> Part No.	Description
KAROT001	KIT, Rotary Drive Kit (To fit AeroCheck+) Including:
ARD002	Accessory, Rotating Drive, Small, Lemo 12-Way. (Mercury)
ALL12-L12-020M	Accessory, Lead, Lemo 12-Way - Lemo 12-Way, 2.0m (Rotating Drive)



PROBE KITS CONTINUED...

CONDUCTIVITY PROBE KIT **NIST** (FOR AEROCHECK+)

<i>ET</i> her NDE Part No.	Description
KACON001	KIT, Conductivity Inspection - NIST - Std Dia 13mm Probe (To fit AeroCheck Plus) Including:
PCON001	# Probe, Conductivity, 60kHz, Dia 13.00mm, Straight, Lemo 7-Way (AeroCheck Plus)
ASIG010	# Accessory, Dual Conductivity Reference Standards, Nominal Values 8.5% and 101% IACS (SigmaCheck) NIST VALUES
ALL12-L07-007-CON	# Accessory, Lead, 12-Way Lemo to 7-Way Lemo, 0.7m, Conductivity (To fit AeroCheck Plus Conductivity Probe)
40516	# SKIRT - Conductivity Probe (AeroCheck Plus)
B3061S	# SCREW - M3 thumb screw
40517	# REFERENCE HOLDER - Dual Conductivity Standard (Thermal Bridge for Stability)
APCON001	# QUICK REFERENCE CARD - Guide to using conductivity probe PCON001

CONDUCTIVITY PROBE KIT **NPL** (FOR AEROCHECK+)

<i>ET</i> her NDE Part No.	Description
KACON002	KIT, Conductivity Inspection - NPL - Std Dia 13mm Probe (To fit AeroCheck Plus) Including:
PCON001	# Probe, Conductivity, 60kHz, Dia 13.00mm, Straight, Lemo 7-Way (AeroCheck Plus)
ASIG011	# Accessory, Dual Conductivity Reference Standards, Nominal Values 8.5% and 101% IACS (SigmaCheck) NPL VALUES
ALL12-L07-007-CON	# Accessory, Lead, 12-Way Lemo to 7-Way Lemo, 0.7m, Conductivity (To fit AeroCheck Plus Conductivity Probe)
40516	# SKIRT - Conductivity Probe (AeroCheck Plus)
B3061S	# SCREW - M3 thumb screw
40517	# REFERENCE HOLDER - Dual Conductivity Standard (Thermal Bridge for Stability)
APCON001	# QUICK REFERENCE CARD - Guide to using conductivity probe PCON001



PENCIL PROBES

DOUBLE SHIELDED - ABSOLUTE & BRIDGE



APPLICATION:

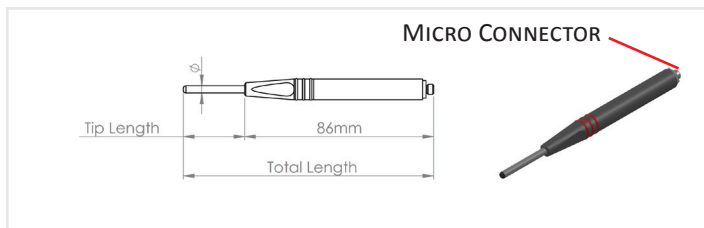
ABSOLUTE PENCIL PROBES: For general purpose inspection of surface breaking defects and metallurgy variations. Uses a Micro connector.

BRIDGE PENCIL PROBES: ETHER NDE newly developed “IB Tech Inside” absolute intrinsically balanced technology which further improves the signal to noise ratio of conventional Absolute Probes giving a significant improvement in inspection reliability. Uses a Lemo 4-Way connector.

SPECIFICATION:

- Double Shielded, used on Fe & NFe applications, Disconnectable.
- Non Magnetic Stainless Steel Shanks - Straight, 90° Tip, 45° Crank, 15° crank + 90° Tip.
- Plastic Handle with finger scallops and neoprene grip.
- Connector – Micro for Absolute and Lemo 4-Way for Bridge (IB Tech Inside).
- Centre frequency/Operating range – 200kHz (50kHz – 600kHz), 500kHz (150kHz – 1.5MHz), 2MHz – (650kHz – 6MHz), 6MHz – (2MHz – 18MHz).
- Probe colour coding available.

STRAIGHT ABSOLUTE WITH PLASTIC HANDLE



STANDARD

ETher NDE Part No.	Centre Freq	Tip Length (Total Length)	Ø Tip	Type
Probe, Shielded, Plastic Handle, Straight:				
PS200PS028-114N	200kHz	28mm Tip Length (Total Length 114mm, 4.5") (Straight Shank)	4.45	Absolute
PS200PS028-114F	200kHz	28mm Tip Length (Total Length 114mm, 4.5") (Straight Shank)	3.30 (Fine)	Absolute
PS500PS028-114N	500kHz	28mm Tip Length (Total Length 114mm, 4.5") (Straight Shank)	4.45	Absolute
PS500PS028-114F	500kHz	28mm Tip Length (Total Length 114mm, 4.5") (Straight Shank)	3.30 (Fine)	Absolute
PS002PS028-114N	2MHz	28mm Tip Length (Total Length 114mm, 4.5") (Straight Shank)	3.30	Absolute
PS002PS028-114F	2MHz	28mm Tip Length (Total Length 114mm, 4.5") (Straight Shank)	2.34 (Fine)	Absolute
PS006PS028-114N	6MHz	28mm Tip Length (Total Length 114mm, 4.5") (Straight Shank)	2.34	Absolute

Other variants available on request

LEADS TO FIT ABOVE PROBES

ETher NDE Part No.	Description	Instrument	Connector Instrument	Connector Probe End	Cable Length	Config.
ALLCX-M02-015A	Lead	WeldCheck/ AeroCheck/ Vantage/ETi	Lemo Coaxial	Micro Plug	1.5m	Absolute
ALL12-M02-015A	Lead	WeldCheck/ AeroCheck/ Hocking	Lemo 12-Way	Micro Plug	1.5m	Absolute
ALL07-M02-015A	Lead	Hocking	Lemo 7-Way	Micro Plug	1.5m	Absolute
ALB02-M02-015A	Lead	Various	BNC Plug	Micro Plug	1.5m	Absolute

STRAIGHT – BRIDGE (IB TECH INSIDE) WITH PLASTIC HANDLE



STANDARD

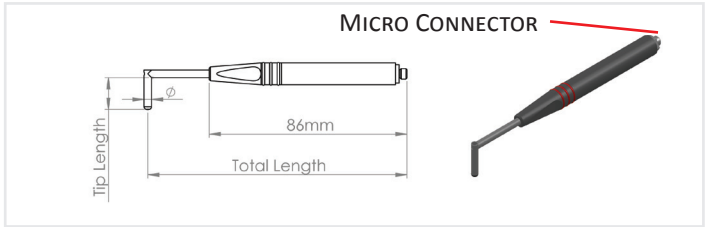
ETher NDE Part No.	Centre Freq.	Tip Length (Total Length)	ØTip	Type
Probe, Shielded, Plastic Handle, Straight:				
PS200PS028-114NB	200kHz	28mm Tip Length (Total Length 114mm, 4.5") (Straight Shank)	4.45	Bridge
PS200PS028-114FB	200kHz	28mm Tip Length (Total Length 114mm, 4.5") (Straight Shank)	3.30 (Fine)	Bridge
PS500PS028-114NB	500kHz	28mm Tip Length (Total Length 114mm, 4.5") (Straight Shank)	4.45	Bridge
PS500PS028-114FB	500kHz	28mm Tip Length (Total Length 114mm, 4.5") (Straight Shank)	3.30 (Fine)	Bridge
PS002PS028-114NB	2MHz	28mm Tip Length (Total Length 114mm, 4.5") (Straight Shank)	3.30	Bridge
PS002PS028-114FB	2MHz	28mm Tip Length (Total Length 114mm, 4.5") (Straight Shank)	2.34 (Fine)	Bridge
PS006PS028-114NB	6MHz	28mm Tip Length (Total Length 114mm, 4.5") (Straight Shank)	2.34	Bridge

Specials available on request

LEADS TO FIT ABOVE PROBES

ETher NDE Part No.	Description	Instrument	Connector Instrument	Connector Probe End	Cable Length	Config.
ALL12-L04-015B	Lead	WeldCheck/ AeroCheck/ Vantage/ETi	Lemo 12-Way	Lemo 4-Way Plug	1.5m	Bridge
ALL07-L04-015B	Lead	Hocking	Lemo 7-Way	Lemo 4-Way Plug	1.5m	Bridge

90° TIP - ABSOLUTE WITH PLASTIC HANDLE



STANDARD

<i>ETher NDE</i> Part No.	Centre Freq.	Tip Length (Total Length)	Ø Tip
Probe, Shielded, Plastic Handle, Right angled 90° tip:			
PS200PR050-114N	200kHz	5.0 (MIN) Tip Length (Total Length 114mm, 4.5") (90deg Tip Shank)	4.45
PS200PR027-114F	200kHz	2.7 (MIN) Tip Length (Total Length 114mm, 4.5") (90deg Tip Shank)	3.30 (Fine)
PS500PR050-114N	500kHz	5.0 (MIN) Tip Length (Total Length 114mm, 4.5") (90deg Tip Shank)	4.45
PS500PR027-114F	500kHz	2.7 (MIN) Tip Length (Total Length 114mm, 4.5") (90deg Tip Shank)	3.30 (Fine)
PS002PR027-114N	2MHz	2.7 (MIN) Tip Length (Total Length 114mm, 4.5") (90deg Tip Shank)	3.30
PS002PR017-114F	2MHz	1.7 (MIN) Tip Length (Total Length 114mm, 4.5") (90deg Tip Shank)	2.34 (Fine)
PS006PR017-114N	6MHz	1.7 (MIN) Tip Length (Total Length 114mm, 4.5") (90deg Tip Shank)	2.34

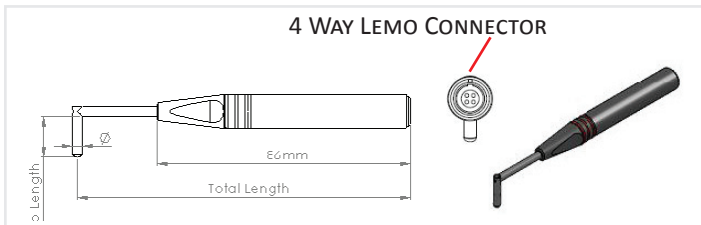
Specials available on request

LEADS TO FIT ABOVE PROBES

<i>ETher NDE</i> Part No.	Description	Instrument	Connector Instrument	Connector Probe End	Cable Length	Config.
ALLCX-M02-015A	Lead	WeldCheck/ AeroCheck/ Vantage / ETi	Lemo Coaxial	Micro Plug	1.5m	Absolute
ALL12-M02-015A	Lead	WeldCheck AeroCheck/ Vantage/ETi/ Hocking	Lemo 12-Way	Micro Plug	1.5m	Absolute
ALL07-M02-015A	Lead	Hocking	Lemo 7-Way	Micro Plug	1.5m	Absolute
ALB02-M02-015A	Lead	Various	BNC Plug	Micro Plug	1.5m	Absolute

90° TIP – BRIDGE (IB TECH INSIDE) WITH PLASTIC HANDLE

4 WAY LEMO CONNECTOR



STANDARD

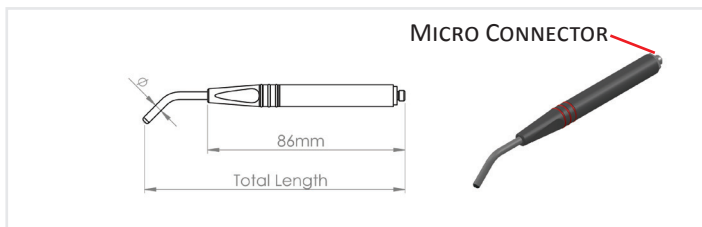
ETher NDE Part No.	Centre Freq.	Tip Length (Total Length)	ØTip
Probe, Shielded, Plastic Handle, Right angled 90° tip:			
PS200PR050-114NB	200kHz	5.0 (MIN) Tip Length (Total Length 114mm, 4.5") (90° Tip Shank)	4.45
PS200PR027-114FB	200kHz	2.7 (MIN) Tip Length (Total Length 114mm, 4.5") (90° Tip Shank)	3.30 (Fine)
PS500PR050-114NB	500kHz	5.0 (MIN) Tip Length (Total Length 114mm, 4.5") (90° Tip Shank)	4.45
PS500PR027-114FB	500kHz	2.7 (MIN) Tip Length (Total Length 114mm, 4.5") (90° Tip Shank)	3.30 (Fine)
PS002PR027-114NB	2MHz	2.7 (MIN) Tip Length (Total Length 114mm, 4.5") (90° Tip Shank)	3.30
PS002PR017-114FB	2MHz	1.7 (MIN) Tip Length (Total Length 114mm, 4.5") (90° Tip Shank)	2.34 (Fine)
PS006PR017-114NB	6MHz	1.7 (MIN) Tip Length (Total Length 114mm, 4.5") (90° Tip Shank)	2.34

Specials available on request

LEADS TO FIT ABOVE PROBES

ETHer NDE Part No.	Description	Instrument	Connector Instrument	Connector Probe End	Cable Length	Config.
ALL12-L04-015B	Lead	WeldCheck/ AeroCheck/ Vantage/ETi/ Hocking	Lemo 12-Way	Lemo 4-Way Plug	1.5m	Bridge
ALL07-L04-015B	Lead	Hocking	Lemo 7-Way	Lemo 4-Way Plug	1.5m	Bridge

45° CRANK – ABSOLUTE WITH PLASTIC HANDLE



STANDARD

<i>ETher NDE</i> Part No.	Centre Freq	Tip Length (Total Length)	ØTip	Type
Probe, Shielded, Plastic Handle, Crank:				
PS200PC195-114N	200kHz	19.5 (0.75") Tip Length (Total Length 114mm, 4.5") (45° Crank Shank)	4.45	Absolute
PS200PC195-114F	200kHz	19.5 (0.75") Tip Length (Total Length 114mm, 4.5") (45° Crank Shank)	3.30 (Fine)	Absolute
PS500PC195-114N	500kHz	19.5 (0.75") Tip Length (Total Length 114mm, 4.5") (45° Crank Shank)	4.45	Absolute
PS500PC195-114F	500kHz	19.5 (0.75") Tip Length (Total Length 114mm, 4.5") (45° Crank Shank)	3.30 (Fine)	Absolute
PS002PC195-114N	2MHz	19.5 (0.75") Tip Length (Total Length 114mm, 4.5") (45° Crank Shank)	3.30	Absolute
PS002PC195-114F	2MHz	19.5 (0.75") Tip Length (Total Length 114mm, 4.5") (45° Crank Shank)	2.34 (Fine)	Absolute
PS006PC195-114N	6MHz	19.5 (0.75") Tip Length (Total Length 114mm, 4.5") (45° Crank Shank)	2.34	Absolute

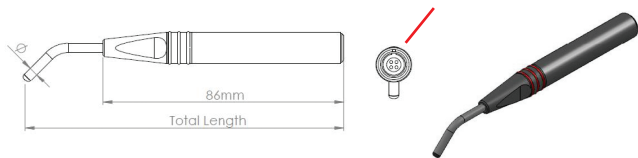
Specials available on request

LEADS TO FIT ABOVE PROBES

<i>ETher NDE</i> Part No.	Description	Instrument	Connector Instrument	Connector Probe End	Cable Length	Config.
ALLCX-M02-015A	Lead	WeldCheck/ AeroCheck/ Vantage, ETi	Lemo Coaxial	Micro Plug	1.5m	Absolute
ALL12-M02-015A	Lead	WeldCheck/ AeroCheck/ Vantage/ETi Hocking	Lemo 12-Way	Micro Plug	1.5m	Absolute
ALL07-M02-015A	Lead	Hocking	Lemo 7-Way	Micro Plug	1.5m	Absolute
ALB02-M02-015A	Lead	Various	BNC Plug	Micro Plug	1.5m	Absolute

45° CRANK – BRIDGE (IB TECH INSIDE) WITH PLASTIC HANDLE

4-WAY LEMO CONNECTOR



STANDARD

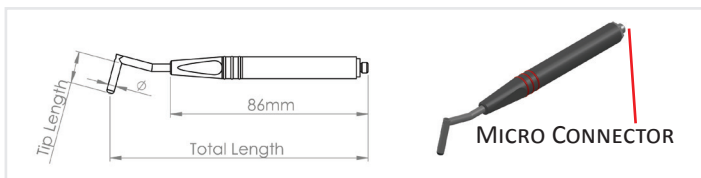
ETher NDE Part No.	Centre Freq	Tip Length (Total Length)	Ø Tip	Type
Probe, Shielded, Plastic Handle, Crank:				
PS200PC195-114NB	200kHz	19.5 (0.75") Tip Length (Total Length 114mm, 4.5") (45° Crank Shank)	4.45	Bridge
PS200PC195-114FB	200kHz	19.5 (0.75") Tip Length (Total Length 114mm, 4.5") (45° Crank Shank)	3.30 (Fine)	Bridge
PS500PC195-114NB	500kHz	19.5 (0.75") Tip Length (Total Length 114mm, 4.5") (45° Crank Shank)	4.45	Bridge
PS500PC195-114FB	500kHz	19.5 (0.75") Tip Length (Total Length 114mm, 4.5") (45° Crank Shank)	3.30 (Fine)	Bridge
PS002PC195-114NB	2MHz	19.5 (0.75") Tip Length (Total Length 114mm, 4.5") (45° Crank Shank)	3.30	Bridge
PS002PC195-114FB	2MHz	19.5 (0.75") Tip Length (Total Length 114mm, 4.5") (45° Crank Shank)	2.34 (Fine)	Bridge
PS006PC195-114NB	6MHz	19.5 (0.75") Tip Length (Total Length 114mm, 4.5") (45deg Crank Shank)	2.34	Bridge

Specials available on request

LEADS TO FIT ABOVE PROBES

ETher NDE Part No.	Description	Instrument	Connector Instrument	Connector Probe End	Cable Length	Config.
ALL12-L04-015B	Lead	WeldCheck/ AeroCheck/ Vantage/ETi/ Hocking	Lemo 12-Way	Lemo 4-Way Plug	1.5m	Bridge
ALL07-L04-015B	Lead	Hocking	Lemo 7-Way	Lemo 4-Way Plug	1.5m	Bridge

15° CRANK 90° TIP - ABSOLUTE WITH PLASTIC HANDLE



STANDARD

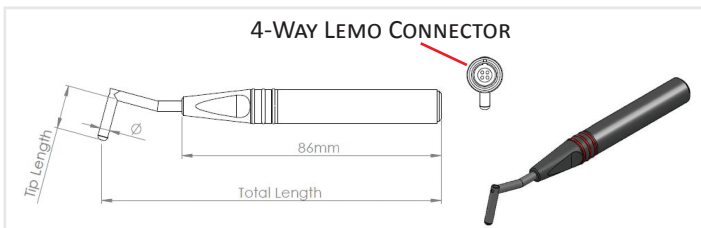
<i>ETher NDE</i> Part No.	Centre Freq	Tip Length (Total Length)	Ø Tip	Type
Probe, Shielded, Plastic Handle, Double crank:				
PS200PD050-114N	200kHz	5.0 (MIN) Tip Length (Total Length 114mm, 4.5") (15° Crank, 90° tip Shank)	4.45	Absolute
PS200PD027-114F	200kHz	2.7 (MIN) Tip Length (Total Length 114mm, 4.5") (15° Crank, 90° tip Shank)	3.30 (Fine)	Absolute
PS500PD050-114N	500kHz	5.0 (MIN) Tip Length (Total Length 114mm, 4.5") (15° Crank, 90° tip Shank)	4.45	Absolute
PS500PD027-114F	500kHz	2.7 (MIN) Tip Length (Total Length 114mm, 4.5") (15° Crank, 90° tip Shank)	3.30 (Fine)	Absolute
PS002PD027-114N	2MHz	2.7 (MIN) Tip Length (Total Length 114mm, 4.5") (15° Crank, 90° tip Shank)	3.30	Absolute
PS002PD017-114F	2MHz	1.7 (MIN) Tip Length (Total Length 114mm, 4.5") (15° Crank, 90° tip Shank)	2.34 (Fine)	Absolute
PS006PD017-114N	6MHz	1.7 (MIN) Tip Length (Total Length 114mm, 4.5") (15° Crank, 90° tip Shank)	2.34	Absolute

Other variants and specials available on request

LEADS TO FIT ABOVE PROBES

<i>ETHer NDE</i> Part No.	Description	Instrument	Connector Instrument	Connector Probe End	Cable Length	Config.
ALLCX-M02-015A	Lead	WeldCheck/ AeroCheck/	Lemo Coaxial	Micro Plug	1.5m	Absolute
ALL12-M02-015A	Lead	Vantage/ETi WeldCheck/ AeroCheck/ Hocking	Lemo 12-Way	Micro Plug	1.5m	Absolute
ALL07-M02-015A	Lead	Hocking	Lemo 7-Way	Micro Plug	1.5m	Absolute
ALB02-M02-015A	Lead	Various	BNC Plug	Micro Plug	1.5m	Absolute

15° CRANK 90° TIP - BRIDGE (IB TECH INSIDE) WITH PLASTIC HANDLE



STANDARD

ETher NDE Part No.	Centre Freq	Tip Length (Total Length)	Ø Tip	Type
Probe, Shielded, Plastic Handle, Double crank:				
PS200PD050-114NB	200kHz	5.0 (MIN) Tip Length (Total Length 114mm, 4.5") (15° Crank, 90° tip Shank)	4.45	Bridge
PS200PD027-114FB	200kHz	2.7 (MIN) Tip Length (Total Length 114mm, 4.5") (15° Crank, 90° tip Shank)	3.30 (Fine)	Bridge
PS500PD050-114NB	500kHz	5.0 (MIN) Tip Length (Total Length 114mm, 4.5") (15° Crank, 90° tip Shank)	4.45	Bridge
PS500PD027-114FB	500kHz	2.7 (MIN) Tip Length (Total Length 114mm, 4.5") (15° Crank, 90° tip Shank)	3.30 (Fine)	Bridge
PS002PD027-114NB	2MHz	2.7 (MIN) Tip Length (Total Length 114mm, 4.5") (15° Crank, 90° tip Shank)	3.30	Bridge
PS002PD017-114FB	2MHz	1.7 (MIN) Tip Length (Total Length 114mm, 4.5") (15° Crank, 90° tip Shank)	2.34 (Fine)	Bridge
PS006PD017-114NB	6MHz	1.7 (MIN) Tip Length (Total Length 114mm, 4.5") (15° Crank, 90° tip Shank)	2.34	Bridge

Specials available on request

LEADS TO FIT ABOVE PROBES

ETher NDE Part No.	Description	Instrument	Connector Instrument	Connector Probe End	Cable Length	Config.
ALL12-L04-015B	Lead	WeldCheck/ AeroCheck/ Vantage/ETi/ Hocking	Lemo 12-Way	Lemo 4-Way Plug	1.5m	Bridge
ALL07-L04-015B	Lead	Hocking	Lemo 7-Way	Lemo 4-Way Plug	1.5m	Bridge



THREAD INSPECTION PROBES (UNSHIELDED)

ABSOLUTE



APPLICATION:

UNSHIELDED ABSOLUTE THREAD INSPECTION

PROBES: For crack detection in external and internal threads.

SPECIFICATION:

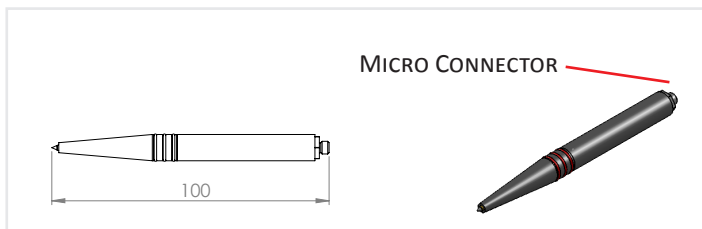
- Micro connector
- Centre frequency range - 200kHz 500kHz, 2MHz
- Operating range – 200kHz (50kHz – 600kHz), 500kHz (150kHz – 1.5MHz), 2MHz – (650kHz – 6MHz)
- Used on Fe & NFe applications
- Disconnectable
- Chisel and Pointed versions available

NOTES:

This range of probes comes with either a pointed or chiselled tip.



STRAIGHT - EXTERNAL THREADS (BOLTS)



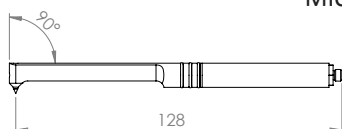
ETher NDE Part No.	Description	Centre Freq.	Tip Shape
Probe, Thread, External (Straight), Pointed/Chiselled			
PTE200PNFE	Probe, Thread, External, 200kHz, Pointed, NFE, Unshielded	200kHz	Pointed
PTE200PFE	Probe, Thread, External, 200kHz, Pointed, FE, Unshielded	200kHz	Pointed
PTE200CNFE	Probe, Thread, External, 200kHz, Chisel, NFE, Unshielded	200kHz	Chisel
PTE200CFE	Probe, Thread, External, 200kHz, Chisel, FE, Unshielded.	200kHz	Chisel
PTE500PNFE	Probe, Thread, External, 500kHz, Pointed, NFE, Unshielded.	500kHz	Pointed
PTE500PFE	Probe, Thread, External, 500kHz, Pointed, FE, Unshielded.	500kHz	Pointed
PTE500CNFE	Probe, Thread, External, 500kHz, Chisel, NFE, Unshielded.	500kHz	Chisel
PTE500CFE	Probe, Thread, External, 500kHz, Chisel, FE, Unshielded.	500kHz	Chisel
PTE002PNFE	Probe, Thread, External, 2MHz, Pointed, NFE, Unshielded.	2MHz	Pointed
PTE002PFE	Probe, Thread, External, 2MHz, Pointed, FE, Unshielded.	2MHz	Pointed
PTE002CNFE	Probe, Thread, External, 2MHz, Chisel, NFE, Unshielded.	2MHz	Chisel
PTE002CFE	Probe, Thread, External, 2MHz, Chisel, FE, Unshielded.	2MHz	Chisel

Other options available on request

LEADS TO FIT ABOVE PROBES

ETHer NDE Part No	Description	Instrument	Connector Instr. End	Connector Probe End	Cable Lgth.	Config.
ALLCX-M02-015A	Lead	Vantage/ETi	Lemo Coaxial	Micro Plug	1.5m	Absolute
ALL12-M02-015A	Lead	Hocking	Lemo 12-Way	Micro Plug	1.5m	Absolute
ALL07-M02-015A	Lead	Hocking	Lemo 7-Way	Micro Plug	1.5m	Absolute
ALB02-M02-015A	Lead	Various	BNC Plug	Micro Plug	1.5m	Absolute

90° CRANK - EXTERNAL & INTERNAL THREADS (BOLTS & NUTS)



MICRO CONNECTOR



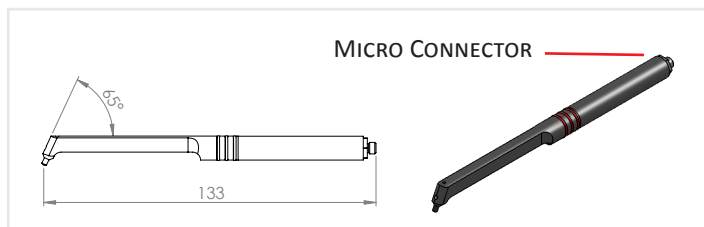
<i>ETher NDE</i> Part No.	Description	Centre Freq.	Tip Shape
Probe, Thread, Right Angled, Pointed/Chiselled			
PTR200PNFE	Probe, Thread, 90°, 200kHz, Pointed, NFE, Unshielded	200kHz	Pointed
PTR200PFE	Probe, Thread, 90°, 200kHz, Pointed, FE, Unshielded	200kHz	Pointed
PTR200CNFE	Probe, Thread, 90°, 200kHz, Chisel, NFE, Unshielded	200kHz	Chisel
PTR200CFE	Probe, Thread, 90°, 200kHz, Chisel, FE, Unshielded.	200kHz	Chisel
PTR500PNFE	Probe, Thread, 90°, 500kHz, Pointed, NFE, Unshielded.	500kHz	Pointed
PTR500PFE	Probe, Thread, 90°, 500kHz, Pointed, FE, Unshielded.	500kHz	Pointed
PTR500CNFE	Probe, Thread, 90°, 500kHz, Chisel, NFE, Unshielded.	500kHz	Chisel
PTR500CFE	Probe, Thread, 90°, 500kHz, Chisel, FE, Unshielded.	500kHz	Chisel
PTR002PNFE	Probe, Thread, 90°, 2MHz, Pointed, NFE, Unshielded.	2MHz	Pointed
PTR002PFE	Probe, Thread, 90°, 2MHz, Pointed, FE, Unshielded.	2MHz	Pointed
PTR002CNFE	Probe, Thread, 90°, 2MHz, Chisel, NFE, Unshielded.	2MHz	Chisel
PTR002CFE	Probe, Thread, 90°, 2MHz, Chisel, FE, Unshielded.	2MHz	Chisel

Other options available on request

LEADS TO FIT ABOVE PROBES

<i>ETHer NDE</i> Part No	Description	Instrument	Connector Instr. End	Connector Probe End	Cable Lgth.	Config.
ALLCX-M02-015A	Lead	Vantage/ETi	Lemo Coaxial	Micro Plug	1.5m	Absolute
ALL12-M02-015A	Lead	Hocking	Lemo 12-Way	Micro Plug	1.5m	Absolute
ALL07-M02-015A	Lead	Hocking	Lemo 7-Way	Micro Plug	1.5m	Absolute
ALB02-M02-015A	Lead	Various	BNC Plug	Micro Plug	1.5m	Absolute

65° CRANK - INTERNAL THREADS (NUTS)



ETher NDE Part No.	Description	Centre Freq.	Tip Shape
Probe, Thread, Internal (65°), Pointed/Chiselled			
PTI200PNFE	Probe, Thread, Internal 65°, 200kHz, Pointed, NFE, Unshielded	200kHz	Pointed
PTI200PFE	Probe, Thread, Internal 65°, 200kHz, Pointed, FE, Unshielded	200kHz	Pointed
PTI200CNFE	Probe, Thread, Internal 65°, 200kHz, Chisel, NFE, Unshielded	200kHz	Chisel
PTI200CFE	Probe, Thread, Internal 65°, 200kHz, Chisel, FE, Unshielded.	200kHz	Chisel
PTI500PNFE	Probe, Thread, Internal 65°, 500kHz, Pointed, NFE, Unshielded.	500kHz	Pointed
PTI500PFE	Probe, Thread, Internal 65°, 500kHz, Pointed, FE, Unshielded.	500kHz	Pointed
PTI500CNFE	Probe, Thread, Internal 65°, 500kHz, Chisel, NFE, Unshielded.	500kHz	Chisel
PTI500CFE	Probe, Thread, Internal 65°, 500kHz, Chisel, FE, Unshielded.	500kHz	Chisel
PTI002PNFE	Probe, Thread, Internal 65°, 2MHz, Pointed, NFE, Unshielded.	2MHz	Pointed
PTI002PFE	Probe, Thread, Internal 65°, 2MHz, Pointed, FE, Unshielded.	2MHz	Pointed
PTI002CNFE	Probe, Thread, Internal 65°, 2MHz, Chisel, NFE, Unshielded.	2MHz	Chisel
PTI002CFE	Probe, Thread, Internal 65°, 2MHz, Chisel, FE, Unshielded.	2MHz	Chisel

Other options available on request

LEADS TO FIT ABOVE PROBES

ETher NDE Part No	Description	Instrument	Connector Instr. End	Connector Probe End	Cable Lgth.	Config.
ALLCX-M02-015A	Lead	Vantage/ETi	Lemo Coaxial	Micro Plug	1.5m	Absolute
ALL12-M02-015A	Lead	Hocking	Lemo 12-Way	Micro Plug	1.5m	Absolute
ALL07-M02-015A	Lead	Hocking	Lemo 7-Way	Micro Plug	1.5m	Absolute
ALB02-M02-015A	Lead	Various	BNC Plug	Micro Plug	1.5m	Absolute



BROAD BAND PROBES

ABSOLUTE & BRIDGE



APPLICATION:

ABSOLUTE UNSHIELDED BROAD BAND PROBES: For general purpose inspection of surface breaking defects and metallurgy variations and to estimate coating (Paint) thickness.

BRIDGE UNSHIELDED BROAD BAND PROBES: ETHER NDE newly developed “IB Tech Inside “ absolute intrinsically balanced technology which further improves the signal to noise ratio of conventional Absolute Probes giving a significant improvement in inspection reliability. Uses a Lemo 4-Way connector.

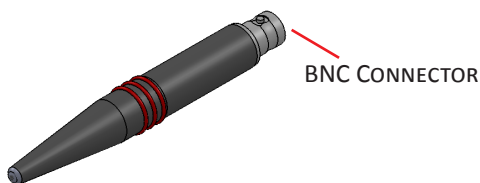
SPECIFICATION:

- Broad range with centre frequency – 5kHz, 20kHz, 100kHz, 500kHz, 2MHz
- Plastic Handle with neoprene grip
- Connector – BNC for Absolute and Lemo 4-Way for Bridge (IB Tech Inside)

NOTES:

A range of balance loads are also available for use with some impedance plane instruments.

ABSOLUTE BROAD BAND PROBES

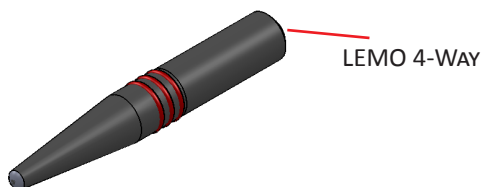


<i>ETher NDE</i> Part No.	Description	Centre Freq.	Freq. Range	Type / Connector
Probe, Unshielded, Broad Band				
PUB2M	Probe, Unshielded, Broad Band, 2MHz	2MHz (5.6uH)	500kHz - 4MHz	Absolute / BNC Socket
PUB500K	Probe, Unshielded, Broad Band, 500k	500kHz (22uH)	150kHz - 1MHz	Absolute / BNC Socket
PUB100K	Probe, Unshielded, Broad Band, 100k	100kHz (82uH)	35kHz - 250kHz	Absolute / BNC Socket
PUB20K	Probe, Unshielded, Broad Band, 20k	20kHz (390uH)	7kHz - 60kHz	Absolute/ BNC Socket
PUB5K	Probe, Unshielded, Broad Band, 5k	5kHz (1500uH)	2kHz - 15kHz	Absolute/ BNC Socket

LEADS TO FIT ABOVE PROBES

<i>ETher NDE</i> Part No.	Description	Instrument	Connector Instrument	Connector Probe End	Cable Length	Config.
ALLCX-M02-015A	Lead	WeldCheck/ AeroCheck/ Vantage/ETi	Lemo Coaxial	BNC Plug	1.5m	Absolute
ALL12-B02-015A	Lead	WeldCheck/ AeroCheck/ Vantage/ETi/ Hocking	Lemo 12-Way	BNC Plug	1.5m	Absolute
ALL07-B02-015A	Lead	Hocking	Lemo 7-Way	BNC Plug	1.5m	Absolute
ALB02-B02-015A	Lead	Various	BNC Plug	BNC Plug	1.5m	Absolute

BRIDGE BROAD BAND PROBES



<i>ETher NDE</i> Part No.	Description	Centre Freq.	Freq. Range	Type / Connector
Probe, Unshielded, Broad Band				
PUB2MB	Probe, Unshielded, Broad Band, 2MHz	2MHz (5.6uH)	500kHz - 4MHz	Bridge / LEMO 4-Way
PUB500KB	Probe, Unshielded, Broad Band, 500k	500kHz (22uH)	150kHz - 1MHz	Bridge / LEMO 4-Way
PUB100KB	Probe, Unshielded, Broad Band, 100k	100kHz (82uH)	35kHz - 250kHz	Bridge / LEMO 4-Way
PUB20KB	Probe, Unshielded, Broad Band, 20k	20kHz (390uH)	7kHz - 60kHz	Bridge/ LEMO 4-Way
PUB5KB	Probe, Unshielded, Broad Band, 5k	5kHz (1500uH)	2kHz - 15kHz	Bridge/ LEMO 4-Way

LEADS TO FIT ABOVE PROBES

<i>ETHer NDE</i> Part No.	Description	Instrument	Connector Instrument	Connector Probe End	Cable Length	Config.
ALFTRI-L04-015	Lead	Victor/ Veritor	Fischer Triax	Lemo 4-Way Plug	1.5m	Bridge
ALL12-L04-015B	Lead	WeldCheck/ AeroCheck/ Vantage/ETi/ Hocking	Lemo 12-Way	Lemo 4-Way Plug	1.5m	Bridge
ALL07-L04-015B	Lead	Hocking	Lemo 7-Way	Lemo 4-Way Plug	1.5m	Bridge



ROTATING PROBES

REFLECTION



APPLICATION:

DIFFERENTIAL ROTATING PROBES: For internal diameter inspection of fastener holes, countersinks and counter bores.

SPECIFICATION:

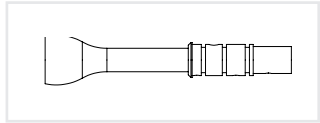
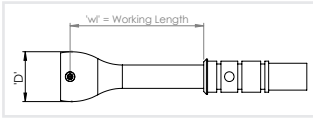
- Probe diameters from 1.6 to 50mm, available in 0.01mm steps.
- Fischer connector to ETHER NDE Small and Large drive also compatible with Hocking, GE, Rohmann and Forster drive units.
- Frequency range from 200kHz to 2MHz.
- Comes in Rigid Stainless Steel and Delrin Flexible options.

NOTES:

When ordering Rotating Probes 0.1mm is automatically taken off probe diameter during manufacture, this should be good for typical hole condition and manufacturing tolerances. Where tolerances are poor allow for greater clearance.

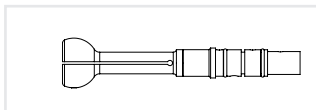
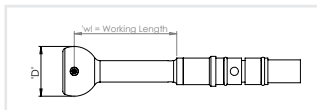
Example: To inspect a $\varnothing 12.7$ (1/2") hole a $\varnothing 12.7$ probe should be ordered which will be manufactured to a $\varnothing 12.6$.

RIGID STAINLESS STEEL



ETher NDE Part No.	Description	Nominal Hole Dia mm	"wl" Working Length mm
Metric Examples			
PRR0300-035	Probe. Rotating, Rigid, Dia = 3.00mm, wl = 35mm	3.00	35.0
PRR0400-035	Probe. Rotating, Rigid, Dia = 4.00mm, wl = 35mm	4.00	35.0
PRR0500-035	Probe. Rotating, Rigid, Dia = 5.00mm, wl = 35mm	5.00	35.0
PRR0600-035	Probe. Rotating, Rigid, Dia = 6.00mm, wl = 35mm	6.00	35.0
PRR0700-035	Probe. Rotating, Rigid, Dia = 7.00mm, wl = 35mm	7.00	35.0
PRR0800-035	Probe. Rotating, Rigid, Dia = 8.00mm, wl = 35mm	8.00	35.0
PRR0900-035	Probe. Rotating, Rigid, Dia = 9.00mm, wl = 35mm	9.00	35.0
PRR1000-035	Probe. Rotating, Rigid, Dia = 10.00mm, wl = 35mm	10.00	35.0
PRR1100-035	Probe. Rotating, Rigid, Dia = 11.00mm, wl = 35mm	11.00	35.0
PRR1200-065	Probe. Rotating, Rigid, Dia = 12.00mm, wl = 65mm	12.00	65.0
PRR1300-065	Probe. Rotating, Rigid, Dia = 13.00mm, wl = 65mm	13.00	65.0
PRR1400-065	Probe. Rotating, Rigid, Dia = 14.00mm, wl = 65mm	14.00	65.0
PRR1500-065	Probe. Rotating, Rigid, Dia = 15.00mm, wl = 65mm	15.00	65.0
PRR1600-065	Probe. Rotating, Rigid, Dia = 16.00mm, wl = 65mm	16.00	65.0
PRR1700-065	Probe. Rotating, Rigid, Dia = 17.00mm, wl = 65mm	17.00	65.0
PRR1800-065	Probe. Rotating, Rigid, Dia = 18.00mm, wl = 65mm	18.00	65.0
PRR1900-065	Probe. Rotating, Rigid, Dia = 19.00mm, wl = 65mm	19.00	65.0
PRR2000-065	Probe. Rotating, Rigid, Dia = 20.00mm, wl = 65mm	20.00	65.0
PRR2100-065	Probe. Rotating, Rigid, Dia = 21.00mm, wl = 65mm	21.00	65.0
PRR2200-065	Probe. Rotating, Rigid, Dia = 22.00mm, wl = 65mm	22.00	65.0
PRR2300-065	Probe. Rotating, Rigid, Dia = 23.00mm, wl = 65mm	23.00	65.0
PRR2400-065	Probe. Rotating, Rigid, Dia = 24.00mm, wl = 65mm	24.00	65.0
PRR2500-065	Probe. Rotating, Rigid, Dia = 25.00mm, wl = 65mm	25.00	65.0

DELTRIN FLEXIBLE PLASTIC



ETher NDE Part No.	Description	Nominal Hole Dia mm	Nominal Diameter Inch (mm)	"wl" Working Length mm
Metric Examples				
PRF040-050051	Probe. Rotating, Flexible, Dia = 4.0 – 5.0mm, wl = 51.00mm	4.0-5.0	3/16" (4.76mm)	51
PRF050-060051	Probe. Rotating, Flexible, Dia = 5.0 – 6.0mm, wl = 51.00mm	5.0-6.0	7/32" (5.56mm)	51
PRF060-070051	Probe. Rotating, Flexible, Dia = 6.0 – 7.0mm wl = 51.00mm	6.0-7.0	1/4" (6.35mm)	51
PRF070-080051	Probe. Rotating, Flexible, Dia = 7.0 – 8.0mm wl = 51.00mm	7.0-8.0	5/16" (7.94mm)	51
PRF080-090051	Probe. Rotating, Flexible, Dia = 8.0 – 9.0mm wl = 51.00mm	8.0-9.0	21/64" (8.33mm)	51
PRF090-100051	Probe. Rotating, Flexible, Dia = 9.0 – 10.0mm wl = 51.00mm	9.0-10.00	3/8" (9.53mm)	51
PRF100-110051	Probe. Rotating, Flexible, Dia = 10.0 – 11.0mm wl = 51.00mm	10.0-11.00	13/32" (10.32mm)	51
PRF110-120051	Probe. Rotating, Flexible, Dia = 11.0 – 12.0mm wl = 51.00mm	11.0-12.00	7/16" (11.11mm)	51
PRF120-130051	Probe. Rotating, Flexible, Dia = 12.0 – 13.0mm wl = 51.00mm	12.00-13.00	1/2" (12.70mm)	51
PRF130-150051	Probe. Rotating, Flexible, Dia = 13.0 – 15.0mm wl = 51.00mm	13.00 - 15.00	9/16" (14.30mm)	51
PRF150-170051	Probe. Rotating, Flexible, Dia = 15.0 – 17.0mm wl = 51.00mm	15.00 - 17.00	5/8" (15.90mm)	51
PRF170-190051	Probe. Rotating, Flexible, Dia = 17.0 – 19.0mm wl = 51.00mm	17.00 - 19.00	11/16" (17.50mm)	51
PRF190-210051	Probe. Rotating, Flexible, Dia = 19.0 – 21.0mm wl = 51.00mm	19.00 - 21.00	3/4" (19.10mm)	51
PRF210-230051	Probe. Rotating, Flexible, Dia = 21.0 – 23.0mm wl = 51.00mm	21.00 - 23.00	7/8" (22.00mm)	51
PRF230-250051	Probe. Rotating, Flexible, Dia = 23.0 – 25.0mm wl = 51.00mm	23.00 - 25.00	15/16" (23.80mm)	51
PRF250-270051	Probe. Rotating, Flexible, Dia = 25.0 – 27.0mm wl = 51.00mm	25.00 - 27.00	1" (25.40mm)	51
PRF270-290051	Probe. Rotating, Flexible, Dia = 27.0 – 29.0mm wl = 51.00mm	27.00 - 29.00	1 1/8" (28.57mm)	51
PRF290-310051	Probe. Rotating, Flexible, Dia = 29.0 – 31.0mm wl = 51.00mm	29.00 - 31.00	1 3/16" (30.17mm)	51
PRF310-330051	Probe. Rotating, Flexible, Dia = 31.0 – 33.0mm wl = 51.00mm	31.00 - 33.00	1 1/4" (31.75mm)	51
PRF330-350051	Probe. Rotating, Flexible, Dia = 33.0 – 35.0mm wl = 51.00mm	33.00 - 35.00	1 3/8" (34.93mm)	51
PRF350-370051	Probe. Rotating, Flexible, Dia = 35.0 – 37.0mm wl = 51.00mm	35.00 - 37.00	1 7/16" (36.51mm)	51
PRF370-390051	Probe. Rotating, Flexible, Dia = 37.0 – 39.0mm wl = 51.00mm	37.00 - 39.00	1 1/2" (38.10mm)	51



STANDARD WELD PROBES

BRIDGE



APPLICATION:

DIFFERENTIAL WELD PROBES: For in-service inspection of welded structures.

SPECIFICATION:

- Straight, 90° Inline, 90° Right Angle
- Diameters, 11.0 (Small), 16 (Medium), 32mm (Large)
- Disconnectable and integral probe cables
- Cable lengths from 1.5 to 50 meters
- Frequency range 100kHz, 20kHz, 100-600kHz
- Minimal lift off signal, can find cracks through paint, oil, conductive and non-conductive coatings
- Made from hard wearing PET
- Stainless steel and ceramic tips available on request.

NOTES:

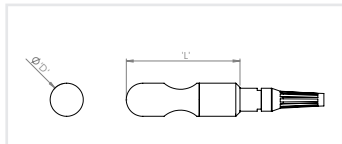
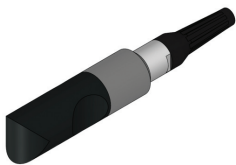
100kHz probes used on standard ferrous welds.

100-600kHz probe can be used on Aluminium and Stainless Steel welds.

20kHz probe can be used on multi-surface applications and Duplex.

STANDARD WELD PROBES TYPES AVAILABLE

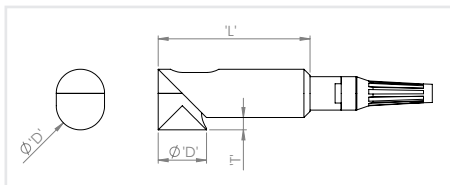
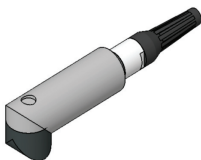
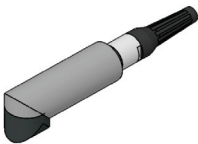
STRAIGHT



Type	"D" = Dia (mm)	"L" = Length (mm)
Small	11	47.5
Medium	16	55
Large	32	76.5

90° INLINE

90° TRANSVERSE



Type	"D" = Dia (mm)	"L" = Length (mm)	"T" = Tip Drop
Small	11	36.5	10.3
Medium	16	50	4.1
Large	32	128	21.1

STANDARD WELD PROBES CODING SYSTEM

PWS100S015L12

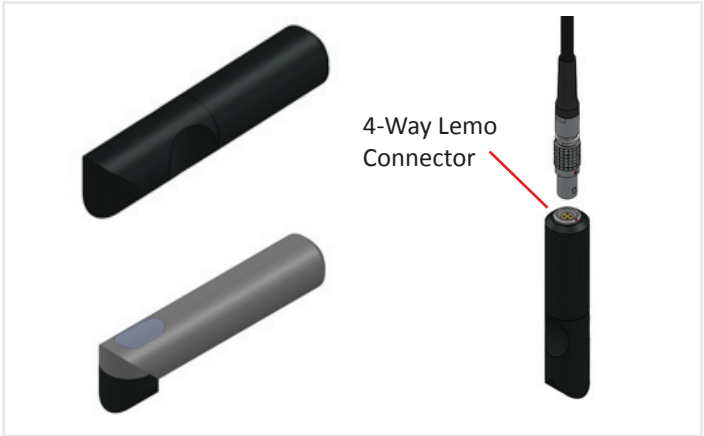
PW	Probe Weld (Plastic)
S	Dia 11.0mm (Small)
M	Dia 16.0mm (Medium)
L	Dia 32.0mm (Large)
100	100kHz (Standard)
020	20kHz Enhanced
106	100-600kHz Multi-surface (Aluminium and Stainless Steel welds)
S	Straight
I	90° Inline
R	90° Transverse
000	Disconnect
015	1.5m Cable
050	5.0m Cable
100	10.0m Cable
500	50.0m Cable
1000	1000.0m Cable
L7	7 Way Lemo – Hocking Locator
L12	12 Way Lemo – WeldCheck/AeroCheck Vantage G2, ETi
J6	6 Way Jaeger – Hocking QuickCheck, 1.1
A4	4-way Amphenol – Zetec
C3	3-way Cannon
L14	14 Way Lemo - Vantage G1
W	Water Proof
C	Ceramic (High Temp)
S	Stainless Steel Tip

Example Part No:

PWS100S015L12

Probe, Weld, Dia. 11.0mm (Small), 100kHz, Straight,
1.5m Cable, Lemo 12-Way.

DISCONNECT WELD PROBES - BRIDGE



NOTES:

- A full range of disconnectable weld probes available for quick interchange.
- Simply select “000” to probe part number as shown on weld probe coding system on previous page.

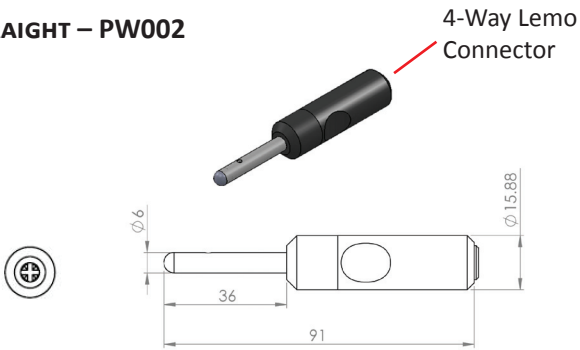
ETher NDE Part No.	Description	Centre Freq.	Configuration
Probe, Weld			
PWS100S000	Probe, Weld, Small (11.00mm), Straight, Disconnect	100kHz	Bridge – Lemo 4-Way
PWM100S000	Probe, Weld, Medium (16.00mm), Straight, Disconnect	100kHz	Bridge – Lemo 4-Way
PWL100S000	Probe, Weld, Large (32.00mm), Straight, Disconnect	100kHz	Bridge – Lemo 4-Way

LEADS TO FIT ABOVE PROBES

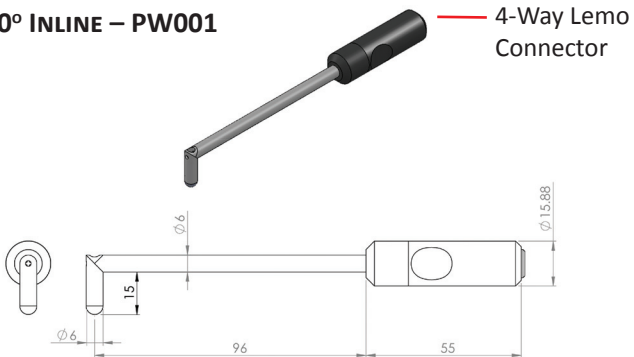
ETHer NDE Part No.	Description	Instrument	Connector Instrument	Connector Probe End	Cable Length	Config.
ALL12-L04-015B	Lead	WeldCheck/ AeroCheck/ Vantage/ETi/ Hocking	Lemo 12-Way	Lemo 4-Way Plug	1.5m	Bridge
ALL07-L04-015B	Lead	Hocking	Lemo 7-Way	Lemo 4-Way Plug	1.5m	Bridge

MINIATURE WELD PROBES - BRIDGE

STRAIGHT – PW002



90° INLINE – PW001



APPLICATION:

- In-service inspection of welded structures, 100kHz, for those hard to reach/confined space inspection areas.

LEADS TO FIT ABOVE PROBES

ETher NDE Part No.	Description	Instrument	Connector Instrument	Connector Probe End	Cable Length	Config.
ALL12-L04-015B	Lead	WeldCheck/ AeroCheck/ Vantage/ETi/ Hocking	Lemo 12-Way	Lemo 4-Way Plug	1.5m	Bridge
ALL07-L04-015B	Lead	Hocking	Lemo 7-Way	Lemo 4-Way Plug	1.5m	Bridge



INTERNAL DIAMETER (ID) PROBES

BRIDGE



APPLICATION:

DIFFERENTIAL ID PROBES: For internal diameter tube inspection, ideal for inspecting tubular heat exchangers.

SPECIFICATION:

- Probe diameters from 7.5 to 150mm, available in 0.1mm steps.
- Dis-connectable and integral probe cables
- Cable lengths from 3.0 to 30 meters.
- Frequency range from 2.7 kHz to 1MHz, centre frequencies 2.7, 10, 24, 76, 190, 400kHz.
- Cross axis and driver/pickup options also available on request.

NOTES:

When ordering ID probes allow 0.8 to 1.5mm less than the tube diameter, This should be good for typical tube condition and manufacturing tolerances.

Where tolerances are poor allow for greater clearance. Tape can be used were necessary to reduce probe 'wobble'.

ID PROBES CODING SYSTEM

PID212L20R24k

PI	Probe Internal Diameter
D	Differential (Bridge)
091	Dia 9.1mm
212	Dia 21.2mm
D	Disconnectable (Standard). For probe diameters between 11.5mm and 55.0mm
E	Disconnectable. For probe diameters above 55.0mm
J	Jaeger 6-Way
L	Lemo 12-Way
M	Lemo 7-Way
N	Lemo 16-Way
Z	4-way Amphenol
03	3.0m Cable
05	5.0m Cable
10	10.0m Cable
20	20.0m Cable (Standard)
30	30.0m Cable
00	Disconnect
F	Flexible
R	Rigid Push/Pull
2.7k	2k7
10k	10kHz
24k	24kHz
190k	190kHz
400k	400kHz

Example Part No:

PID212L20R24k

Probe, Internal Diameter, Differential, Dia 21.2mm,
Lemo 12-Way, 20 meters, Rigid Push/Pull, 24kHz

ID DIS-CONNECTABLE CABLE CODING SYSTEM

CIDL20R

- CI Cable Internal Diameter
- D Differential (Bridge)**
- J Jaeger 6-Way
- L Lemo 12-Way
- M Lemo 7-Way
- Z 4-way Amphenol
- 03 3.0m Cable
- 05 5.0m Cable
- 10 10.0m Cable
- 20 20.0m Cable (Standard)
- 30 30.0m Cable
- F Flexible
- R Rigid Push/Pull

Example Part No:

CIDL20R

Cable, Internal Diameter, Differential, Lemo 12-Way, 20meters, Rigid Push/Pull.

OTHER OPTIONS AVAILABLE ON REQUEST.

RIGID PUSH / PULL



Lemo 4-Way 2+2 Type

FLEXIBLE





LOW FREQUENCY (SPOT FACE) PROBES STRAIGHT AND 90°



APPLICATION:

REFLECTION SUB SURFACE PROBES: for general purpose inspection of sub-surface corrosion and flaws.

This probe has excellent depth penetration making it ideal for multi-layer inspections.

SPECIFICATION:

- Broad frequency ranges.
- Excellent low frequency performance.
- Integrated 4-way Lemo connector.
- Built in balance coils.
- Right angled probes are intrinsically balanced.

NOTES:

The lower the frequency the deeper the depth of penetration.

LOW FREQUENCY (SPOT FACE) PROBES - STRAIGHT

LEMO 4-WAY



ETher NDE Part No.	Description	∅	Body Material	Frequency Range	Connector
Probe, Surface, Straight					
PUS07	Probe, Surface, Straight,	7mm	St Steel	1kHz – 100kHz	Lemo 4-Way
PUS08	Probe, Surface, Straight,	8mm	St Steel	1kHz – 100kHz	Lemo 4-Way
PUS11	Probe, Surface, Straight,	11mm	Acetal	300Hz – 100KHz	Lemo 4-Way
PUS13	Probe, Surface, Straight,	13mm	Acetal	200Hz – 200KHz	Lemo 4-Way
PUS16	Probe, Surface, Straight,	16mm	Acetal	300Hz – 100kHz	Lemo 4-Way
PUS24	Probe, Surface, Straight,	24mm	Acetal	80Hz – 60KHz	Lemo 4-Way
PUS32	Probe, Surface, Straight,	32mm	Acetal	80Hz – 60KHz	Lemo 4-Way

LEADS TO FIT ABOVE PROBES

ETher NDE Part No.	Description	Instrument	Connector Instrument	Connector Probe End	Cable Length	Config.
ALL12-L04-015R	Lead	WeldCheck/ AeroCheck/ Vantage/ETi/ Hocking	Lemo 12-Way	Lemo 4-Way	1.5m	Reflection
ALL07-L04-015R	Lead	Hocking	Lemo 7-Way	Lemo 4-Way	1.5m	Reflection
ALJ06-L04-015R	Lead	Hocking	Jaeger 6-Way	Lemo 4-Way	1.5m	Reflection

SURFACE INSPECTION PROBES - 90°



<i>ETher NDE</i> Part No.	Description	∅	Body Material	Frequency Range	Connector
Probe, Surface, Right Angled					
PUR11	Probe, Surface, Right Angled	11mm	Acetal	300Hz – 200KHz	Lemo 4-Way
PUR13	Probe, Surface, Right Angled	13mm	Acetal	200Hz – 200KHz	Lemo 4-Way
PUR16	Probe, Surface, Right Angled	16mm	Acetal	300Hz – 100kHz	Lemo 4-Way
PUR24	Probe, Surface, Right Angled	24mm	Acetal	80Hz – 60KHz	Lemo 4-Way
PUR32	Probe, Surface, Right Angled	32mm	Acetal	80Hz – 60KHz	Lemo 4-Way

LEADS TO FIT ABOVE PROBES

<i>ETher NDE</i> Part No.	Description	Instrument	Connector Instrument	Connector Probe End	Cable Length	Config.
ALL12-L04-015R	Lead	WeldCheck/ AeroCheck/ Vantage/ETi/ Hocking	Lemo 12-Way	Lemo 4-Way	1.5m	Reflection
ALL07-L04-015R	Lead	Hocking	Lemo 7-Way	Lemo 4-Way	1.5m	Reflection
ALJ06-L04-015R	Lead	Hocking	Jaeger 6-Way	Lemo 4-Way	1.5m	Reflection



SLIDING PROBES

DUAL ELEMENT

PFS001 - DUAL ELEMENT SLIDING PROBE

LEMO 4-WAY REFLECTION



OPTIONAL GUIDE AVAILABLE: P/N: 40090

PFS002 - DUAL ELEMENT SLIDING PROBE

2 X MICRO CONNECTORS



APPLICATION:

Typically used on aircraft wings (and on other similar structures) to detect cracks and corrosion on or near the surface around fasteners and in deeper layers under the skins.

The above probes either slide along or over rows of fasteners.

PROBE CODING:

PFS001: Dual Element Sliding Probe - Reflection - Lemo 4-Way - contains a transmit and receive element - 400Hz-50kHz - used on fastener head sizes 1mm and below.

PFS002: Dual Element Sliding Probe - Tx, Rx - contains a transmit and receive element - 100Hz-500kHz - Comes with 1.5, 2.5 and 3.5mm wide lens.

LEADS TO FIT ABOVE PROBES

<i>ET</i> her NDE Part No.	Description	Instrument	Connector Instrument	Connector Probe End	Cable Length	Config.
ALL12-L04-015R	Lead	WeldCheck/ AeroCheck/ Vantage/ETi/ Hocking	Lemo 12-Way	Lemo 4-Way Plug	1.5m	Reflection
ALL12-M02-M02-015AR	Lead	WeldCheck/ AeroCheck/ Vantage/ETi/ Hocking	Lemo 12-Way	X2 micro Plug	1.5m RX TX	Reflection



CONDUCTIVITY PROBE



APPLICATION:

For use with the SigmaCheck Eddy Current Conductivity Meter. Conductivity is widely used to indicate material type and determine the state of heat treatment.

In order to give accurate readings the SigmaCheck uses a three-point reference method. The first measurement with the probe in the air and then two further measurements are required which span the range of interest.

The SigmaCheck is supplied with a detachable reference piece with two standards that cover the range of commonly used metals.

13MM CONDUCTIVITY PROBE

LEMO 5-WAY



<i>ETher NDE</i> Part No.	Description	Instrument
PSIG001	Probe, Conductivity, 60, 120, 240 and 480kHz, Dia 13.00mm, Straight, Lemo 5-Way	SigmaCheck

8MM CONDUCTIVITY PROBE

LEMO 5-WAY



<i>ETHer NDE</i> Part No.	Description	Instrument
PSIG002	Probe, Conductivity, 60, 120, 240 and 480kHz, Dia 8.00mm, Straight, Lemo 5-Way	SigmaCheck

NOTES:

Each probe is supplied with an SD card, which holds the probes characteristics; this is then inserted into the SigmaCheck being used.

LEADS TO FIT ABOVE PROBES

<i>ETHer NDE</i> Part No.	Description	Instrument
ALL05-L05-012-SIG	Accessory, Lead, 5-Way Lemo to 5-Way Lemo, 1.2m (SigmaCheck)	SigmaCheck

AEROCHECK CONDUCTIVITY PROBE



Will only work on an AEROCHECK+ with lead number:
ALL12-L07-007-CON

APPLICATION:

For use with the AEROCHECK+ Eddy Current Conductivity Meter feature on the AEROCHECK+ Flaw Detector. The probe has an internal memory that stores the probe characteristics for calculating conductivity. Only one test frequency can be applied to a probe.

PART NUMBER

<i>ETher NDE</i> Part No.	Description	Instrument
PCON001	Probe, Conductivity, 60kHz, Dia 13.00mm, Straight, Lemo 7-Way	AeroCheck+

LEADS TO FIT ABOVE PROBES

<i>ETher NDE</i> Part No.	Description	Instrument
ALL12-L07-007-CON	Accessory, Lead, 12-Way Lemo to 7-Way Lemo, 0.7m, Conductivity	AeroCheck+



AIRCRAFT WHEEL PROBES - BRIDGE



APPLICATION:

For use with the VeeScan EC wheel inspection system, for detecting surface breaking cracks in wheels.

SPECIFICATION:

Bridge connected absolute (integral balance load) with circular head. Recommended Frequency 200kHz option 100kHz, 500kHz and 1.5 MHz. Recommended diameter 6mm (9mm also available and narrow shaft for large wheels)

Part No:	Freq.	'D' Dia.	'A' Dia.	'B' Dia.	'X' Lgth	'Y' Lgth	Description
PA06-100B	100k	1/4" (6mm)	4.0	6.35	172	257	Probe, Veescan, Head Dia 6mm 100kHz
PA06-200B	200k	1/4" (6mm)	4.0	6.35	172	257	Probe, Veescan, Head Dia 6mm 200kHz
PA06-500B	500k	1/4" (6mm)	4.0	6.35	172	257	Probe, Veescan, Head Dia 6mm 500kHz
PA06-002B	2.0M	1/4" (6mm)	4.0	6.35	172	257	Probe, Veescan, Head Dia 6mm 2MHz
PA06-100FB	100k	1/4" (6mm)	4.0	6.35	122	207	Probe, Veescan, Head Dia 6mm 100kHz Fine Shaft
PA06-200FB	200k	1/4" (6mm)	4.0	6.35	122	207	Probe, Veescan, Head Dia 6mm 200kHz Fine Shaft
PA06-500FB	500k	1/4" (6mm)	4.0	6.35	122	207	Probe, Veescan, Head Dia 6mm 500kHz Fine Shaft
PA06-002FB	2.0M	1/4" (6mm)	4.0	6.35	122	207	Probe, Veescan, Head Dia 6mm 2MHz Fine Shaft

Part No:	Freq.	'D' Dia.	'A' Dia.	'B' Dia.	'X' Lgth	'Y' Lgth	Description
PA09-100B	100k	3/8" (9mm)	6.35	6.35	172	257	Probe, Veescan, Head Dia 9mm 100kHz
PA09-200B	200k	3/8" (9mm)	6.35	6.35	172	257	Probe, Veescan, Head Dia 9mm 200kHz
PA09-500B	500k	3/8" (9mm)	6.35	6.35	172	257	Probe, Veescan, Head Dia 9mm 500kHz
PA09-002B	2.0M	3/8" (9mm)	6.35	6.35	172	257	Probe, Veescan, Head Dia 9mm 2MHz
PA09-100FB	100k	3/8" (9mm)	6.35	6.35	122	207	Probe, Veescan, Head Dia 9mm 100kHz Fine Shaft
PA09-200FB	200k	3/8" (9mm)	6.35	6.35	122	207	Probe, Veescan, Head Dia 9mm 200kHz Fine Shaft
PA09-500FB	500k	3/8" (9mm)	6.35	6.35	122	207	Probe, Veescan, Head Dia 9mm 500kHz Fine Shaft
PA09-002FB	2.0M	3/8" (9mm)	6.35	6.35	122	207	Probe, Veescan, Head Dia 9mm 2MHz Fine Shaft



TEST BLOCKS

GENERAL PURPOSE WITH SLOTS



APPLICATION:

Test blocks – general purpose with 0.2 (0.008”), 0.5 (0.020”) and 1.0mm (0.040”) slots to enable correct calibration.

<i>ETher NDE</i> Part No.	Description	Material
Accessory, Test Block		
ATBF	Accessory. Test Block, Ferrous (Steel EN1A), 0.2, 0.5, 1.0mm slots	Ferrous (Steel EN1A)
ATBA	Accessory. Test Block, Aluminium Alloy 7075-T6, 0.2, 0.5, 1.0mm slots	Aluminium Alloy 7075-T6
ATBT	Accessory. Test Block, Titanium 6A14V, 0.2, 0.5, 1.0mm slots	Titanium 6A14V
ATBS	Accessory. Test Block, Stainless Steel 304, 0.2, 0.5, 1.0mm slots (AUSTENITIC)	Stainless Steel
ATBS316	Accessory. Test Block, Stainless Steel 316, 0.2, 0.5, 1.0mm slots	Stainless Steel 316

CONDUCTIVITY TEST BLOCK

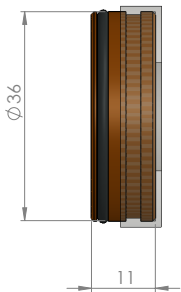


APPLICATION:

Used as a reference in the application of electrical conductivity measurement of non-ferrous metals. Ideal for both laboratory and field use. Blocks are supplied with calibration certificates.

CALIBRATION:

- Blocks are tested and are certified and traceable to National Standard (NPL, UK) Conductivity References.
- Blocks are calibrated at 20°C, at a frequency of 60kHz and to an accuracy of +/- 1.2% of the value or +/-0.4% IACS; whichever is less.



<i>ETher NDE</i> Part No.	Material	% IACS (Value Range)	Siemens/m (Value Range)
ATBC-COPPER	Copper	(99.9-102.5)	(57.9-59.5)
ATBC-ALU1200	Aluminium Alloy, 1200-H4	(57.2-60.5)	(33.2-35.1)
ATBC-ALU6082	Aluminium Alloy, 6082-T6	(43.8-49.0)	(25.4-28.4)
ATBC-ALU6061	Aluminium Alloy, 6061-T4	(40.3-43.8)	(23.4-25.4)
ATBC-ALU2014A-T6	Aluminium Alloy, 2014A-T6	(37.4-40.3)	(21.7-23.4)
ATBC-ALU2014A-T4	Aluminium Alloy, 2014A-T4	(34.7-37.4)	(20.1-23.4)
ATBC-ALU7075	Aluminium Alloy, 7075-T6	(30.0-34.1)	(17.4 -19.8)
ATBC-ALU5083	Aluminium Alloy, 5083	(26.6-30.0)	(15.4-17.4)
ATBC-BRASS	Brass, CZ 121	(23.3-26.6)	(13.5-15.4)
ATBC-PBRONZE	Phosphor Bronze	(16.8-21.9)	(9.8-12.7)
ATBC-NICSILVER	Nickel Silver, LC1291	(9.0-9.9)	(5.2-5.7)
ATBC-STST303S	Stainless Steel, 303 S	(2.1-2.5)	(1.2-1.4)
ATBC-TITANIUM	Titanium, 6AL-4V	(1.0-1.1)	(0.6-0.7)

WELD PROBE TEST BLOCK



APPLICATION:

Coating thickness calibration standard with 0.5 (0.02"), 1.0 (0.04") and 2.0mm (0.08") slots including x4 0.5mm (0.02") shims, used in conjunction with Broad Band (paint) Probe PUB100k to set sensitivity levels before weld inspection.

<i>ET</i> her NDE Part No.	Description	Material
Accessory, Test Block, Weld		
ATBW	Accessory. Test Block, Weld Probe, Ferrous (Steel EN1A) + x4 0.5mm Shims, 0.5, 1.0, 2.0mm slots	Ferrous (Steel EN1A) + x4 0.5mm Shims
ATBWDUP	Accessory. Test Block, Weld Probe, Duplex, 2205 x4 0.5mm Shims, 0.5, 1.0, 2.0mm slots	Duplex x4 0.5mm Shims



PROBE LEADS



NOTES:

Leads come as standard in a 1.5m cable length. Other lengths available on request.

ETHER NDE WELDCHECK, AEROCHECK, AEROCHECK+, VANTAGE G2, ETi (LEMO COAXIAL / LEMO OO - ABSOLUTE)

ETHER NDE Part No.	Description	Instrument	Connector Instrument	Connector Probe End	Cable Length	Config.
ALLCX-B02-015A	Lead	ETHER	Lemo OO	Micro Plug	1.5m	Absolute
ALLCX-M02-015A	Lead	ETHER	Lemo OO	BNC Plug	1.5m	Absolute

ETHER NDE WELDCHECK, AEROCHECK, AEROCHECK+, VANTAGE G2, ETi - HOCKING PHASEC 2200/D60/D62, PHASEC 3D, PHASEC 2D, PHASEC 2s, LOCATOR 3, (LEMO 12-WAY)

ETHER NDE Part No.	Description	Instrument	Connector Instrument	Connector Probe End	Cable Length	Config.
ALL12-L04-015R	Lead	ETHER/Hocking	Lemo 12-Way	Lemo 4-Way	1.5m	Reflection
ALL12-L04-015B	Lead	ETHER/Hocking	Lemo 12-Way	Lemo 4-Way	1.5m	Bridge
ALL12-M02-015A	Lead	ETHER/Hocking	Lemo 12-Way	Micro Plug	1.5m	Absolute
ALL12-B02-015A	Lead	ETHER/Hocking	Lemo 12-Way	BNC Plug	1.5m	Absolute
ALL12-B02-B02-015B	Lead	ETHER/Hocking	Lemo 12-Way	BNC Plug x2	1.5m	Bridge
ALL12-L05-015F	Lead	ETHER/Hocking	Lemo 12-Way	Lemo 5-Way	1.5m	FastScan

HOCKING PHASEC / QUICK CHECK (JAEGER 6-WAY)

<i>ETher NDE</i> Part No.	Description	Instrument	Connector Instrument	Connector Probe End	Cable Length	Config.
ALJ06-L04-015R	Lead	Hocking	Jaeger 6-Way	Lemo 4-Way	1.5m	Reflection
ALJ06-L04-015B	Lead	Hocking	Jaeger 6-Way	Lemo 4-Way	1.5m	Bridge

BNC (CABLE TYPE RG174)

<i>ETher NDE</i> Part No.	Description	Instrument	Connector Instrument	Connector Probe End	Cable Length	Config.
ALB02-B02-015A	Lead	Various	BNC Plug	BNC Plug	1.5m	Absolute
ALB02-M02-015A	Lead	Various	BNC Plug	Micro Plug	1.5m	Absolute

HOCKING LOCATOR 2, LOCATOR 2s (LEMO 7-WAY)

<i>ETher NDE</i> Part No.	Description	Instrument	Connector Instrument	Connector Probe End	Cable Length	Config.
ALL07-L04-015R	Lead	Hocking	Lemo 7-Way	Lemo 4-Way	1.5m	Reflection
ALL07-L04-015B	Lead	Hocking	Lemo 7-Way	Lemo 4-Way	1.5m	Bridge
ALL07-M02-015A	Lead	Hocking	Lemo 7-Way	Micro Plug	1.5m	Absolute
ALL07-B02-015A	Lead	Hocking	Lemo 7-Way	BNC	1.5m	Absolute
ALL07-B02-B02-015A	Lead	Hocking	Lemo 7-Way	BNC Plug x2	1.5m	Absolute



PROBE ADAPTERS



NOTES:

Adapters come (as standard) in 150mm length. Other lengths available on request.

<i>ETher NDE</i> Part No.	Description	Instrument	Connector Instrument	Connector Probe End	Cable Length	Config.
AAL12P-L07S	Adapter	ETHer/ Hocking	Lemo 12-Way	Lemo 7-Way	1.5m	All
AAL12-J06P	Adapter	ETHer/ Hocking	Lemo 12-Way	Jaeger 6-Way	1.5m	All
AAL12-Z04SB	Adapter	ETHer/ Hocking	Lemo 12-Way	Amphenol 4-Way	1.5m	Bridge
AAL12-Z04SR	Adapter	ETHer/ Hocking	Lemo 12-Way	Amphenol 4-Way	1.5m	Reflection
AAL07P-L12S	Adapter	Hocking	Lemo 7-Way	Lemo 12-Way	1.5m	All

AALCX-B02S - ACCESSORY, ADAPTER, LEMO OO TO BNC JACK (SHORT) (LEMO OO TO BNC)



AAB02-LCXS - ACCESSORY, ADAPTER, BNC SOCKET TO LEMO OO SOCKET (SHORT) (BNC TO LEMO OO)



AAL12P-B02S - ACCESSORY, ADAPTER, 12-WAY LEMO TO BNC SOCKET (FIXED 61MM LONG)



MERCURY “MINI” ROTARY DRIVE



Eddy current rotary inspections of fastener holes and countersinks are performed routinely in the Aircraft Maintenance Industry, but also now increasingly used in for the inspection of bolt-holes on wind turbines.

High-speed surface inspection is also another area of increasing usage.

Perfect for tight spaces, the Mercury Rotary Drive is designed and manufactured in-house. Featuring a clearly visible alarm LED and a camera thread mounting to facilitate easy attachment to an inspection fixture.

Compatible with the AeroCheck, AeroCheck+, Vantage G2, ETi 200, Hocking Phasec 2 & 3 and Industry Standard 4 Pin Fischer Rotary Probes.

SPECIFICATION:

ETHer Part Number	ARD002
Connector	LEMO 12 Way
Rotation Speed	3000, 2700, 2400, 2100, 1800, 1500, 1200, 1020, 840 and 600 rpm
Dimensions	Height: 80.9mm, Width: 25mm, Length: 34.5mm
Weight	300 grams

LEADS TO FIT

ETHer NDE Part No.	Description	Instrument
ALL12-L12-020M	Accessory, Lead, Lemo 12-Way - Lemo 12-Way, 2.0m (Rotating Drive)	AeroCheck/ Vantage G2 ETi/Hocking

Full range of Rotary Test Blocks available

EDDY CURRENT EQUIPMENT AVAILABLE FROM *ETHER* NDE



AEROCHECK+
Eddy Current Flaw Detector



AEROCHECK
Eddy Current Flaw Detector



WELDCHECK
Eddy Current Flaw Detector



ETi-200 Advanced
Eddy Current Flaw Detector



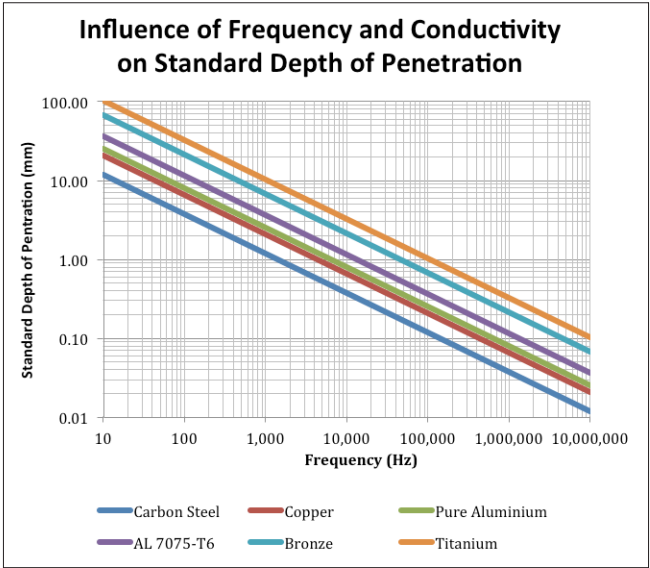
VEESCAN Aircraft Wheel
Inspection System



SIGMACHECK Eddy Current
Conductivity Meter

Find out more about all these products and
more at ethernde.com

USEFUL EDDY CURRENT FORMULAE



You can download this and other useful Eddy Current Information from our website at

ethernde.com/formulae



We have local distributors worldwide who are on hand to help you with all your *ETHER NDE* products.

To contact your local distributor please email sales@ethernde.com and we will put you directly in touch with them.

ETHER NDE offer a full range of Eddy Current NDT Equipment and Services including:

Flaw Detectors
Conductivity Meters
Aircraft Wheel Inspection Systems
Calibration & Repair

ETHER NDE, Endeavour House, Unit 18, Brick Knoll Park
Ashley Road, St Albans, Hertfordshire, AL1 5UG, UK

+44 (0)1582 767912

sales@ethernde.com

ethernde.com

