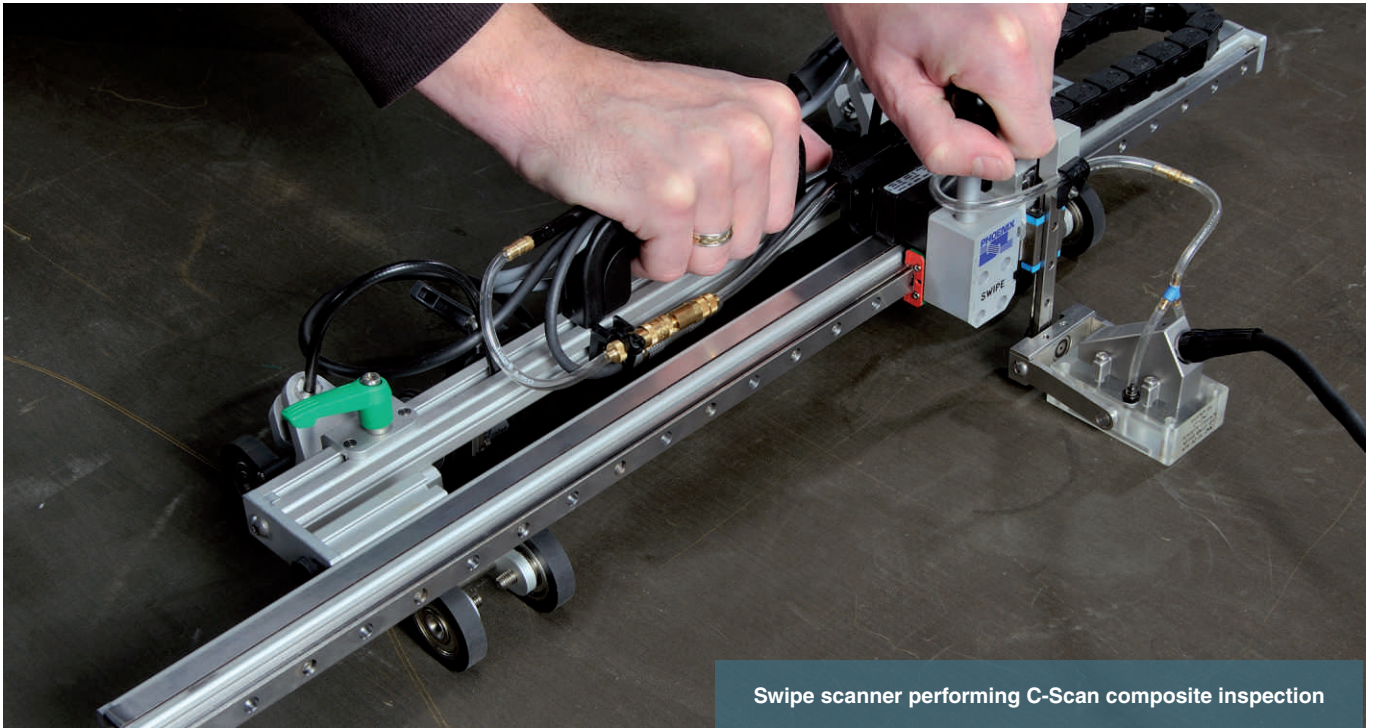


# Swipe

## Manual X-Y Scanner



Swipe scanner performing C-Scan composite inspection

Swipe from Phoenix ISL is a two axis manually operated X-Y scanner. It enables quick C-Scan inspection of flat or curved components with unlimited travel in one direction. It is suitable for inspection with ultrasonic phased array, conventional pulse-echo or eddy current techniques.

The Swipe scanner is fully encoded on both axis and can be configured to operate with any probe and wedge combination.

The innovative design allows the swipe arm to be changed to suit the coverage needed from 400mm up to 800mm. The wheels allow unlimited scanning in the rolling direction.

The scanner incorporates a quick-release brake to ensure stability whilst performing a scan. Also included is a three button junction box that can be configured to start, pause and save scans providing the user with more control without the need to leave the scanner.

### Features

- Interchangeable swipe arms available from 400mm up to 800mm
- Dual axis encoding
- Unlimited scan length (rolling axis)
- Quick release brake locks rolling axis to maintain position during swipe scan
- Three button junction box to start, pause and save scans
- Quick release handles
- For use on ferritic and non-ferritic material

# Swipe

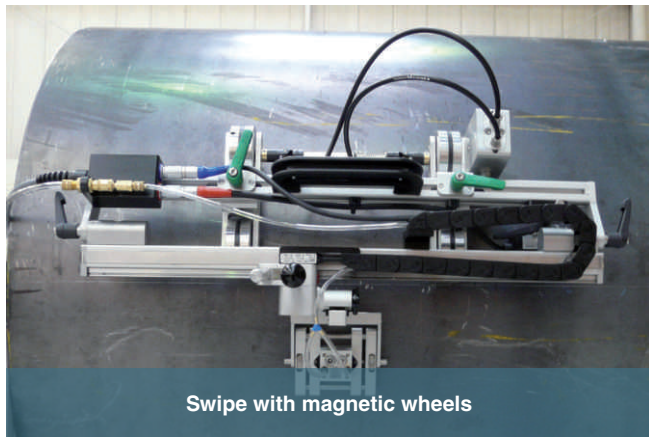
## Scanner Specification

**Weight:** Max. 5kg (dependent on configuration)

**Encoder resolution:** X = 10 steps/mm  
Y = 1000 steps/mm

**Encoder connector:** Any

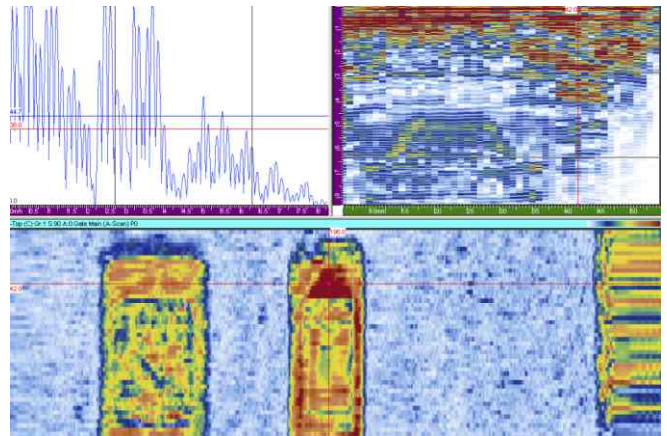
Model	Length (X) mm (in.)	Width (Y) mm (in.)	Height (Z) mm (in.)
Swipe 400	unlimited	400 (16)	155 (6.2)
Swipe 600	unlimited	600 (24)	155 (6.2)
Swipe 800	unlimited	800 (32)	155 (6.2)



Swipe with magnetic wheels

## Benefits

- User-friendly scanner, allows for quick, effective setups
- Operates on any material (magnetic wheels available)
- Operates in any orientation
- Can be used with any manufacturers probes, wedges and instrumentation



Phased Array data collected using the Swipe scanner with a 64 element PA probe

## Standard Swipe Scanner Kit:

- Swipe scanner frame and 400mm arm
- 1 x brake handle
- Cable management
- 1 x 40mm PA toolpost to hold PA/Pulse-Echo wedge
- 2 x encoders with 5m cable
- Irrigation tubing and accessories
- Protective carry case



Innovators in NDT Technology

[www.phoenixisl.co.uk](http://www.phoenixisl.co.uk)



**Phoenix Inspection Systems Ltd.**  
Dalton House, 40 Hardwick Grange  
Woolston, Warrington, Cheshire  
WA1 4RF United Kingdom  
**Tel** +44 (0)1925 826000  
**Fax** +44 (0)1925 838788  
**Email** sales@phoenixisl.co.uk